

SOFITEL  
LUXURY HOTELS

SOFITEL LONDON ST JAMES  
INSPIREDMEETINGS™

12 MEETING ROOMS  
INCLUDING  
1 EXECUTIVE BOARDROOM

DEDICATED MEETING PLANNERS

BUSINESS CENTRE

183 GUESTROOMS  
INCLUDING  
10 JUNIOR SUITES, 7 PRESTIGE SUITES AND 1 ROYAL SUITE

THE BALCON RESTAURANT  
WITH PRIVATE DINING ROOM  
ST JAMES BAR  
THE ROSE LOUNGE

SO FIT WITH SHA CHAIR  
SO SPA  
FEATURING  
STEAM ROOM AND JACUZZI

FREE WI-FI  
VALET PARKING  
«THE GOLDEN KEYS» CONCIERGE



YOUR INSPIREDMEETINGS™ PLANNER  
TEL: +44 (0) 20 7747 2237 - H3144-SB@SOFITEL.COM

6 WATERLOO PLACE SW1Y 4AN - LONDON - UNITED KINGDOM

WWW.SOFITELSTJAMES.COM

PHOTOS © GLENN ATKEN, JEFFERSON SMITH, TONY HARRIS



SOFITEL LONDON  
ST JAMES

SOFITEL INSPIREDMEETINGS

Experience the «Art de Recevoir» at Sofitel London St James with 5852ft² (542m²) of room space at your disposal. The InspiredMeetings™ team will be at your disposal to ensure that your events and conferences are a success.

The Balcon



A hidden gem in the heart of London, Sofitel London St James lies discreetly in one of the most prestigious and lively areas of London. Created in a magnificent grade II listed building, the five star hotel boasts accommodation to suit every taste.

The hotel, comprising 183 rooms with 10 Junior Suites, 7 Prestige Suites and 1 Royal Suite, is enhanced by a luxury spa, So SPA and a gym, So FIT.

Offering a sophisticated but relaxed welcome, the hotel features an all day dining restaurant, The Balcon, an elegant cocktail bar, the St James Bar, and a relaxing lounge, The Rose Lounge, ideal for afternoon teas.

Magnifique Facilities

The Belgavia



The Westminster suite



Unique and Tailor-Made Banqueting

Dedicated to your event, the InspiredMeetings™ Planners are here to help you plan your event in the smallest details to ensure you enjoy a seamless service and a stress-free experience.

Whether you are organising a board meeting or a private dinner, we will work with you and the Executive Chef to create a menu that suits your needs.

Our restaurant, The Balcon, also features an exclusive dining room which can accommodate 7 to 16 guests. Flooded with natural daylight and separated by silk curtains, the private dining room offers a very private area whilst giving the opportunity to enjoy the atmosphere of the restaurant.

To cater for all manner of functions, from discreet board meetings to lavish banquets or weddings, Sofitel London St James provides banqueting facilities in one of the most sought-after sites in London.

All named after distinguished districts of London, the 12 rooms, diverse in size and versatile, have a neutral light feel perfect for any kind of meeting or event.

All the rooms are equipped with state-of-the-art audio visual facilities, such as remote touch screen system to monitor the rooms. Wi-Fi, video conferencing for up to 12 people, glass screens with rear projection or LCD screens.

The Boardroom Suite with its own ante room and private dining room is ideal for an exclusive meeting or a comfortable private breakfast, lunch or dinner for up to 12 people, while the Westminster Suite can accommodate 180 guests theatre style.

Refined Meeting Rooms

Turn your meetings in London into InspiredMeetings!



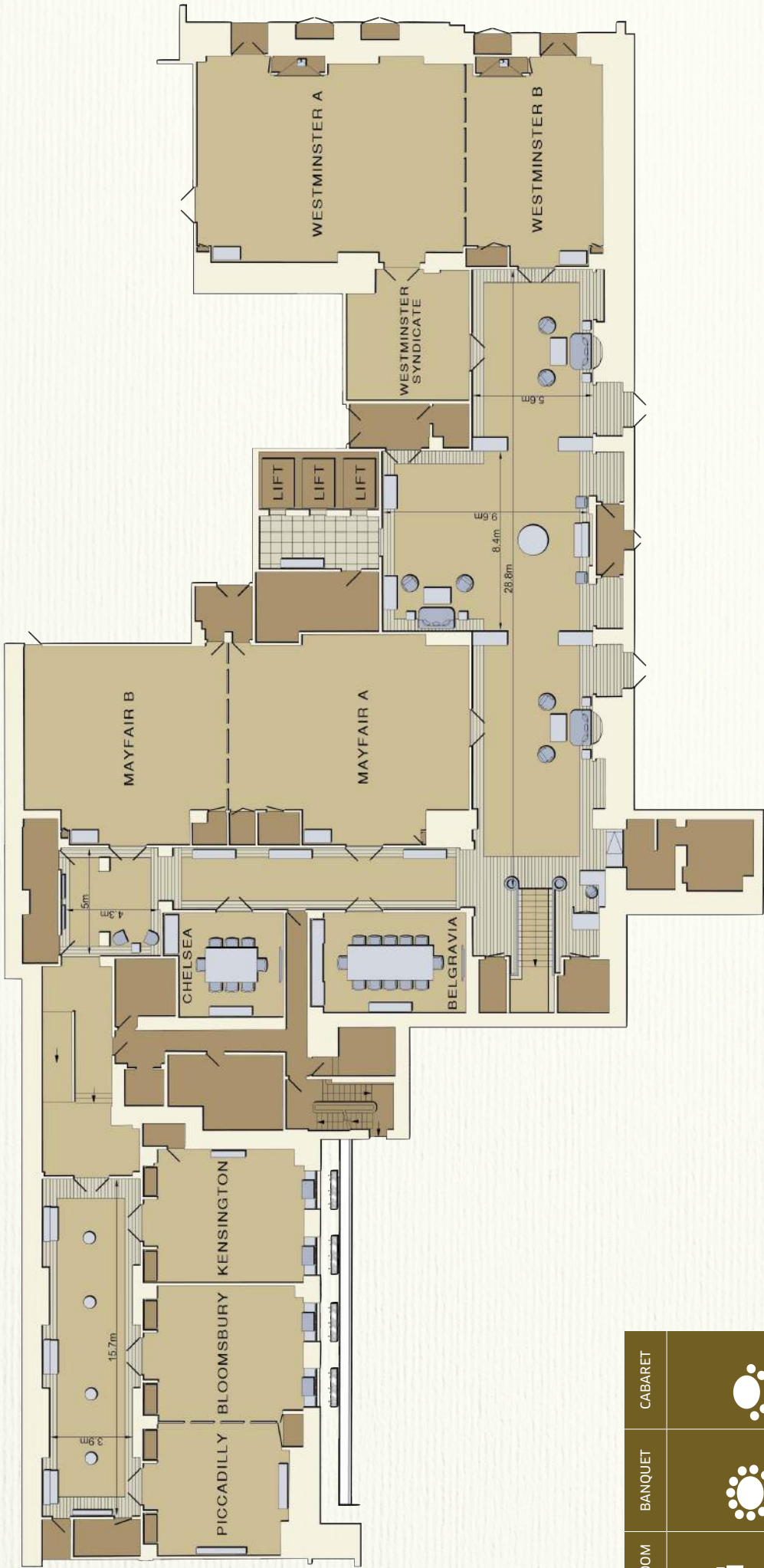
I nspired by you  
Staged by us

InspiredMeetings™ are organised by experts who capture the essence of your project in order to make your event unique, personalised and an experience where life is Magnifique. Committed to building completely successful and tailored meetings and events, the dedicated InspiredMeetings™ team will suggest creative custom-made banqueting options, customise the environment with modern and high-tech equipment to fit your needs, recommend innovative activities to stimulate your participants and... much more.



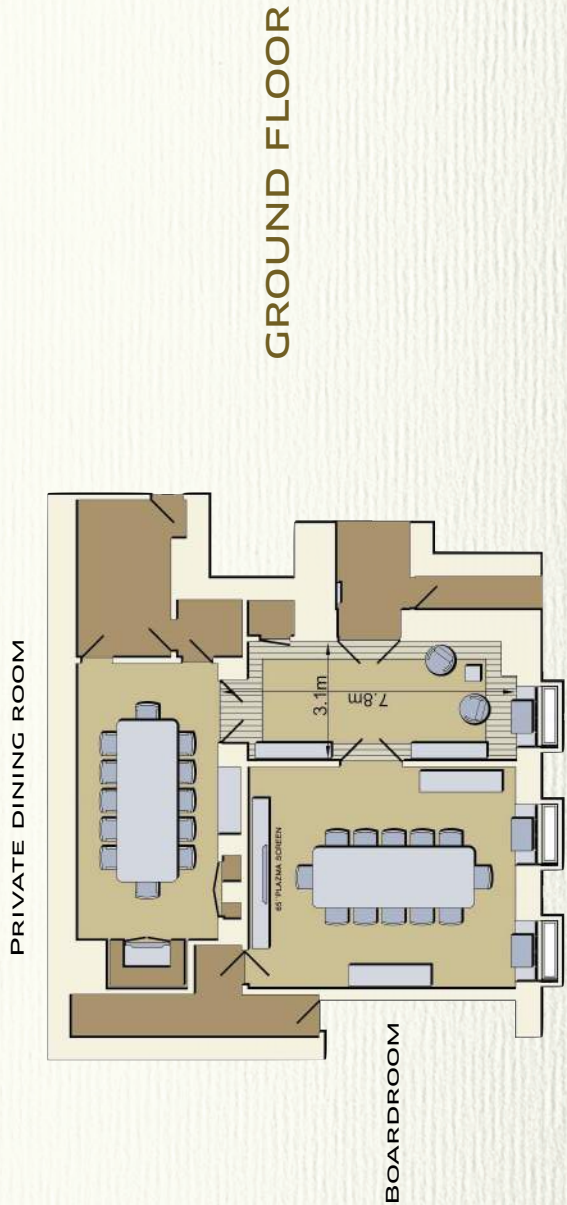


# MEETING ROOMS LAYOUT AND CAPACITIES



LOWER GROUND FLOOR

MEETING ROOMS		AREA (M <sup>2</sup> )	AREA (FT <sup>2</sup> )	LOWER GROUND FLOOR											
				THEATRE	U-SHAPE	BOARDROOM	CLASSROOM	BANQUET	CABARET						
MAYFAIR SUITE	195	2100	160	36	36	125	120	80							
MAYFAIR A	85	950	80	25	25	50	60	35							
MAYFAIR B	85	950	80	25	25	50	60	35							
WESTMINSTER SUITE	155	1750	180	45	45	125	130	90							
WESTMINSTER A	105	1200	120	30	30	60	90	50							
WESTMINSTER B	50	540	50	20	20	40	30	25							
PICCADILLY / BLOOMSBURY	80	860	70	30	30	60	50	40							
PICCADILLY	35	380	30	16	16	25	20	-							
BLOOMSBURY	40	480	40	16	16	25	20	-							
KENSINGTON	44	460	40	16	16	25	20	-							
BELGRAVIA	30	330	-	-	12	-	-	-							
CHELSEA	25	260	-	-	8	-	-	-							
GROUND FLOOR															
PRIVATE DINING ROOM	30	290	-	-	12	-	12	-							
BOARDROOM	45	440	-	-	12	-	-	-							



GROUND FLOOR