

SOFITEL
LUXURY HOTELS

SOFITEL MUNICH
BAYERPOST

INSPIRED MEETINGS



CUSTOMISED CONFERENCE SERVICE BY SOFITEL INSPIREDMEETINGS®.

Sofitel's conference addresses combine typically French flair with regional charm and offer a fantastic framework for creative business meetings. We leave nothing to chance from supervisory board and board meetings to high-quality company seminars and top-rate conferences. Our InspiredMeetings™ event planners organise your event down to the last detail, including the latest conference and video conference technology as well as interpreter booths.

SOFITEL INSPIREDMEETINGS™ MEANS THE HIGHEST CREATIVITY AND QUALITY.

Be inspired all over the work by the creative event planning of Sofitel: Whether it is a soirée in a small group of people or an opulent banquet, a meeting at the board room and or a highly-regarded product launch, French and international menus or champagne and cocktails - the creativity of our event planners has no limits.



THE PLANNING PHASE

Give your event a personal touch

The InspiredMeetings™ event planners from Sofitel are there during the entire planning process as personal contact people and coordinate the equipment and conference equipment to your personal needs and goals. Six criteria of excellence guarantee an unforgettable conference experience:

- 1. Individually decorated conference rooms
- 2. Cutting-edge conference equipment
- 3. Sophisticated gastronomy and menu selection
- 4. Customised entertainment programme
- 5. Individually designed conference rooms
- 6. Services as required



ON THE DATE OF THE EVENT

Personalised service and commitment

On the day of the event, the InspiredMeetings™ concierge is there to help and will ensure that your event will go according to plan and will be a success. We at Sofitel go all out to transform your events to InspiredMeetings™ from the very first moment.

With our Meetings&Events online booking service, with the click of a mouse, you can choose from the best Sofitel locations around the world which best meet your needs.



INSPIRED EVENT PLANNER

Design your completely personalised meeting

As a reliable and competent contact person for Sofitel's excellent conference facilities, the Sofitel InspiredMeetings™ expert will see you through the entire planning process so that the facilities are tailored to your needs and goals. Six major categories offer unlimited combinations for an unforgettable experience:

- Individually configured conference rooms
- Cutting-edge equipment
- Refined banquets
- Event-appropriate activities
- Harmoniously styled rooms
- Need-based services



INSPIRED EVENT CONCIERGE

Individual solutions, commitment and anticipation

The Sofitel InspiredMeetings™ Concierge is there at your side to put heart and soul into seeing that everything goes according to plan to ensure that your event is a complete success.



Life is Magnifique in Munich!



Sofitel Munich Bayerpost

INFORMATION

ADDRESS

SOFITEL Munich Bayerpost
Bayerstraße 12
80335 Munich
Tel: 089 599480
Fax: 089 599481000
h5413@sofitel.com
www.sofitel.com



LOCATION

SOFITEL Munich Bayerpost combines the charming magnetism of a historical building with cutting-edge interior design by the architect Haller & Klein. Behind the Wilhelmsque façades of the former Royal Bavarian post office, the essence of an elegant, cosmopolitan and contemporary hotel culture awaits you within. Here the French way of life is strongly emphasised and is quite tangible.

The metropolitan city of Munich lies within a landscape of many lakes and forests: A Bavarian zest for life and potpourri of culture and fashion are always worth the trip, any time of year.

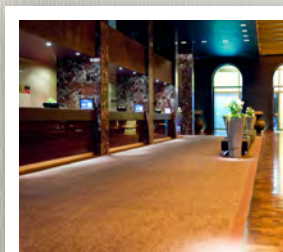
In the heart of Munich and in direct proximity to the best addresses for culture, gastronomy and shopping, the Sofitel Munich Bayerpost is the ideal starting point to discover the city and the Bavarian zeal for life. And in the hotel itself everything is in place to make every stay an unforgettable experience.

DISTANCES

DOWN TOWN	500 M
CENTRAL STATION	15 M
TRADE FAIR (MESSE)	7 KM
AIRPORT	41KM



Spa



Lobby

INFORMATION

ACTIVITIES & ATTRACTIONS

Discover the town hall on Marienplatz, the Frauenkirche church, the Residence, Odeon Square and Viktualienmarkt (daily food market). Visit the famous museums and the old and new Pinakothek or the Pinakothek of Modern Art and the German Museum. Take a deep breath in Olympiapark, in the English Garden or in the park adjacent to Nymphenburg Castle.

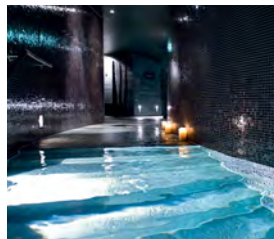
Life is Magnifique in Munich!

SO SPA

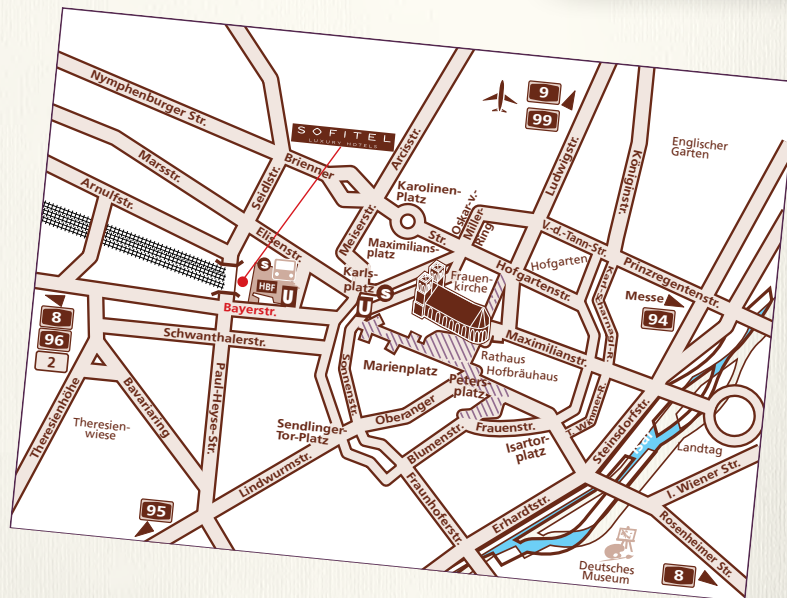
In the 570 m² "So SPA" with high-quality fitness studio, snail-shaped pool with counter-current machine, sauna, steam bath and deep relaxation room, a large range of activities is available. In addition, you can book massages and cosmetic treatments. Experience beauty treatments by Cinq Mondes and the exquisite skin care series Carita of Paris.



So Spa



So Spa



INFORMATION

ROOMS

396 rooms

including

12 Junior Suites

31 Duplex Junior Suites

4 Executive Junior Suites

4 Prestige Suites

4 Opera Suites

1 Imperial Suite - "Pearl"

1 Magnificent Apartment "Oyster"

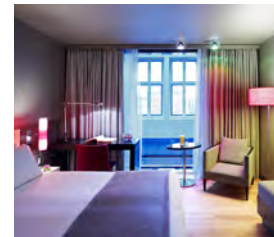
The 339 elegant rooms and 57 suites which are tailored to the highest demands combine sophisticated materials such as leather, wood, chrome and glass.

Enjoy these comfort highlights

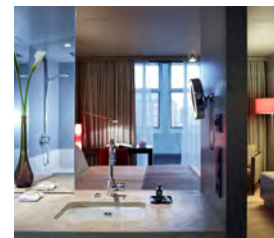
Like the exclusive Sofitel "My Bed™" concept or the natural stone wellness baths integrated into the living area.

The colourful, two-floor duplex junior suites on the top floor offer a wonderful view of the roofs of Munich or into the Alps.

The Pearl and Oyster suites are perfectly suited for exclusive presentations, meet & greets in a small and personal group and with a special atmosphere.



Superior Room



Luxury Room



Luxury Bathroom

INFORMATION

IMPERIAL SUITE "PEARL"

How it shimmers! What glamour! A room like a diva, inspired by famous Hollywood classics like Grace Kelly: pure style and yet extravagant, modern and yet timeless and with an inimitable grandeur. Shining lights bathe the six-metre-high ceilings in silvery light. Wall coverings with golden glass pearls shine stylishly.

- Glamorous suite with 80m² with a separate living and sleeping area
- A very extensive living room with a separate eating area, balcony and design fireplace
- Brilliant Bang & Olufsen technology in TV and HiFi area



Imperial Suite

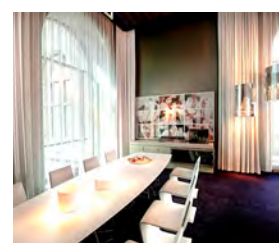


INFORMATION

MAGNIFICENT APARTMENT "OYSTER"

Fashionable, modern, with ceilings six metres high, impressive window fronts and the most spacious room design possible. The finest materials with an extraordinary finish meet the free feeling of the room here. A living experience which impresses – and with which you can impress.

- The largest suite in the hotel with a separate living room, bedroom and work room in 175m² including own kitchen
- Can be connected to another room upon request
- Unique light ambience with an individual ceiling installation which can be individually set with a touch panel
- Brilliant Bang & Olufsen technology in TV and HiFi area
- 13m² large monitor wall for films, portraits and presentations



Magnificent Apartment



INFORMATION

CULINARY PLEASURES

We pamper our guests in the culinary sense with innovations from French cuisine and other refined delights.



*Event Restaurant
Schwarz & Weiz*



DÉLICE La Brasserie



Isarbar

SCHWARZ & WEIZ

The event restaurant Schwarz&Weiz will welcome you in the morning with an extensive SOFITEL breakfast buffet, at noon with a well-balanced lunch buffet and can be exclusively rented out in the evenings.

DÉLICE LA BRASSERIE

DÉLICE La Brasserie offers simple but high-quality cuisine with French basics but with a modern touch.

ISARBAR

At ISARBAR you will find a stylish ambience to enjoy a glass of wine or to end the day with friends with our special drink Isargold. Sample the modern variations of international classics, sophisticated wines and spirits in the lounge, library or on the terrace.

SOFITEL MUNICH BAYERPOST



Event Facilities

EVENT FACILITIES

GENERAL OVERVIEW

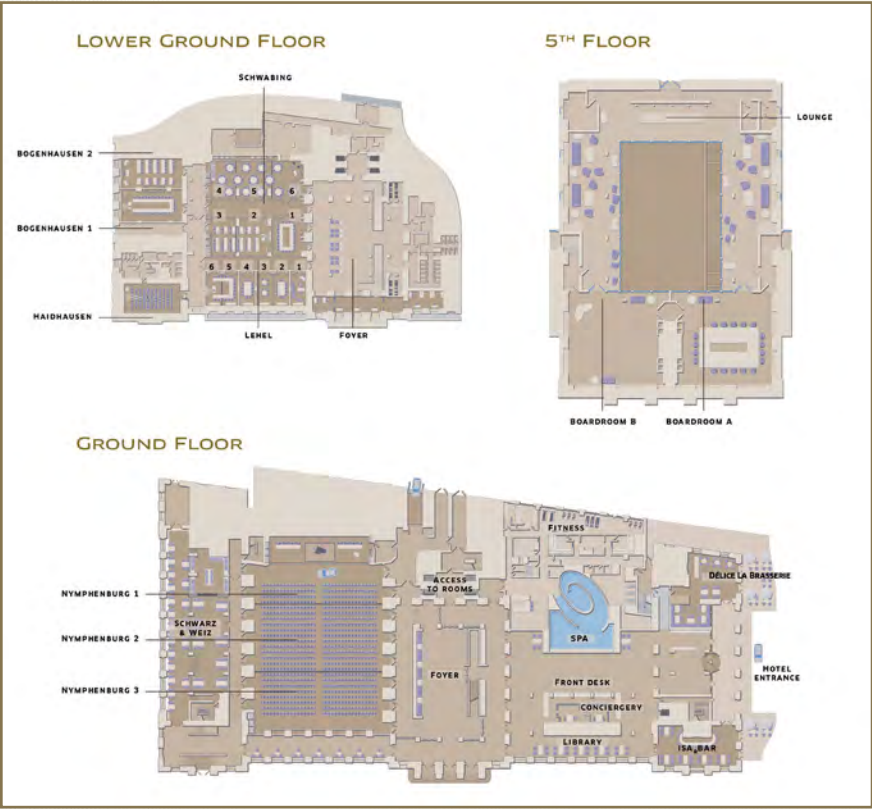
Meetings, conferences and gala events are events of the highest significance for you and your company. In order to ensure the seamless handling of these important dates, SOFITEL Munich Bayerpost offers professional and customised solutions. Our experienced teams take over the entire organisation of your event and provide support to you and your guests with the excellent service typical to Sofitel, so that your stay will become an unforgettable moment.

20 MEETING ROOMS	AREA (M²)	LENGTH (M)	WIDTH (M)	HEIGHT (M)	PARLIAMENT	THEATRE	U-SHAPE	BLOCK	BANQUET	COCKTAIL
LEHEL 1	23	6,89	3,36	3,10	-	-	-	8	-	-
LEHEL 2	25	6,89	3,56	3,10	-	16	-	12	-	-
LEHEL 2&3	50	6,89	7,23	3,10	16	26	16	16	10	-
LEHEL 3	25	6,89	3,56	3,10	-	16	-	12	-	-
LEHEL 4	24	6,89	3,54	3,10	-	-	-	10	-	-
LEHEL 5	24	6,89	3,47	3,10	-	16	-	12	-	-
LEHEL 5&6	49	6,89	7,05	3,10	16	26	16	16	10	-
LEHEL 6	24	6,89	3,47	3,10	-	16	-	12	-	-
HAIDHAUSEN	76	12,20	6,20	3,10	39	60	25	22	30	-
BOGENHAUSEN 1	92	13,20	7,00	3,10	54	72	29	26	40	-
BOGENHAUSEN 2	83	13,20	7,00	3,10	54	72	29	26	40	-
SCHWABING 1-6	405	20,70	19,30	3,80	156	250	-	-	250	270
SCHWABING 1	51	8,20	6,30	3,85	24	40	16	16	20	-
SCHWABING 2	59	8,20	7,55	3,85	32	48	16	16	20	-
SCHWABING 3	43	8,20	5,25	3,85	18	32	12	16	20	-
SCHWABING 4	46	8,75	5,25	3,85	18	32	12	16	20	-
SCHWABING 5	64	8,75	7,55	3,85	32	48	16	16	20	-
SCHWABING 6	51	8,15	6,30	3,85	24	40	16	16	20	-
SCHWABING 1-2	110	8,20	13,85	3,85	62	90	36	32	60	-
SCHWABING 2-3	103	8,20	19,30	3,85	48	90	36	32	60	-
SCHWABING 1-3	153	8,20	19,30	3,85	72	96	46	50	90	-
SCHWABING 1-3 & CORRIDOR	230	12,20	19,30	3,85	126	140	-	-	130	-
SCHWABING 4-5	110	8,75	12,80	3,85	48	90	36	32	40	-
SCHWABING 5-6	115	8,75	16,30	3,85	62	90	36	32	40	-
SCHWABING 4-6	161	8,75	19,30	3,85	72	96	46	50	90	-
SCHWABING 4-6 & CORRIDOR	238	12,75	19,30	3,85	126	140	-	-	130	-
NYMPHENBURG 1-3	923	35,50	26,00	5,90	516	800	-	-	400	800
NYMPHENBURG 1&2	614	19,20	26,00	5,90	348	496	-	-	250	-

EVENT FACILITIES

GENERAL OVERVIEW

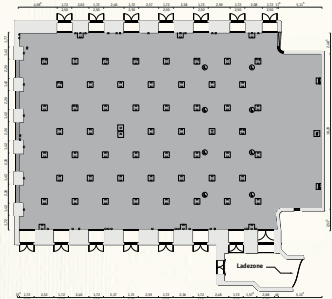
- All conference rooms are fully air-conditioned and can be darkened
- Cutting-edge conference and presentation equipment, innovative light and sound equipment
- All rooms have analogue, ISDN and high-speed Internet
- A unique, design-oriented atmosphere
- Spacious foyer areas offer enough room for your individual event concept



EVENT FACILITIES

EVENT AREA GROUND FLOOR

Nymphenburg 1 - 3



ROOM NAME	LENGTH (M)	WIDTH (M)	HEIGHT (M)	AREA (M²)	BANQUET	BLOCK	THEATRE	PARLIAMENT	U-SHAPE
NYMPHENBURG 1-3	35,5	26	5,9	923	400		800	516	
NYMPHENBURG 1&2	19,2	26	5,9	614	250		496	348	
NYMPHENBURG 2&3	23,5	26	5,9	611	220		450	312	
NYMPHENBURG 1	12	26	5,9	297	90	50	166	132	60
NYMPHENBURG 2	12,2	26	5,9	317	160	50	206	144	60
NYMPHENBURG 3	11,3	26	5,9	294	160	50	166	120	60

EVENT FACILITIES

EVENT AREA BASEMENT

Schwabing 1-6

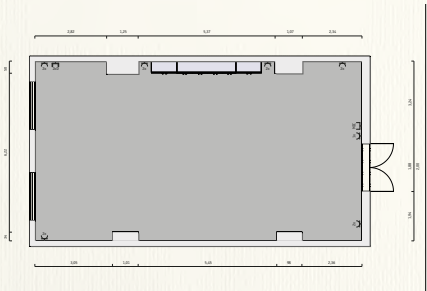


ROOM NAME	LENGTH (M)	WIDTH (M)	HEIGHT (M)	AREA (M²)	BANQUET	BLOCK	THEATRE	PARLIAMENT	U-SHAPE
SCHWABING 1-6	20,70	19,30	3,85	405	250		210	130	
SCHWABING 1	8,20	6,30	3,85	51	20	20	42	30	15
SCHWABING 2	8,20	7,55	3,85	59	30	20	46	30	15
SCHWABING 3	8,20	5,25	3,85	43	20	20	36	21	12
SCHWABING 4	8,75	5,25	3,85	46	20	20	36	21	12
SCHWABING 5	8,75	7,55	3,85	64	30	20	46	30	15
Schwabing 6	8,15	6,30	3,85	51	20	20	36	30	15
Schwabing 1-2	8,20	13,85	3,85	110	60	30	86	62	35
Schwabing 2-3	8,20	19,30	3,85	103	60	32	86	51	35
Schwabing 1-3	8,20	19,30	3,85	153	90	50	118	72	52
Schwabing 1-3 Plus12,20	19,30	3,85	230	130		150	100		
Schwabing 4-5	8,75	12,80	3,85	110	60	32	86	51	35
Schwabing 5-6	8,75	16,30	3,85	115	60	32	86	62	35
Schwabing 4-6	8,75	19,30	3,85	161	90	50	118	70	52
Schwabing 4-6 Plus12,75	19,30	3,85	238	130		148	100		

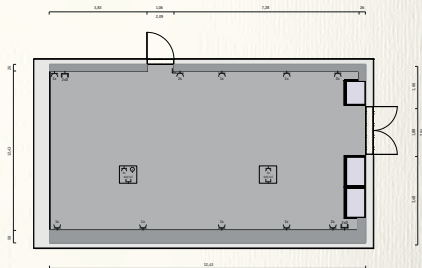
EVENT FACILITIES

EVENT AREA BASEMENT

Bogenhausen 1 - 2, Haidhausen



Bogenhausen



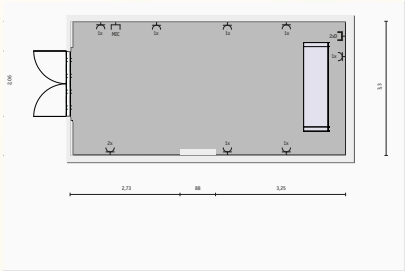
Haidhausen

ROOM NAME	LENGTH (M)	WIDTH (M)	HEIGHT (M)	AREA (M²)	BANQUET	BLOCK	THEATRE	PARLIAMENT	U-SHAPE
HAIDHAUSEN	12,20	6,20	3,10	76	30	22	60	39	25
BOGENHAUSEN 1	13,20	7,00	3,10	92	40	26	72	54	29
BOGENHAUSEN 2	13,20	6,30	3,10	83	40	26	72	54	29

EVENT FACILITIES

EVENT AREA BASEMENT

Lehel 1-6

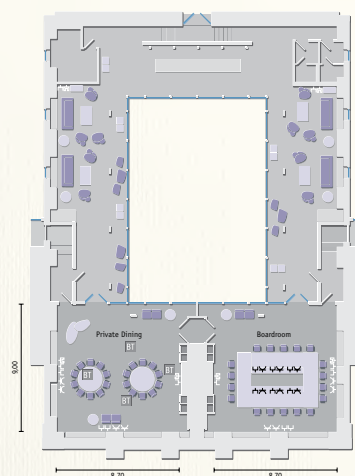
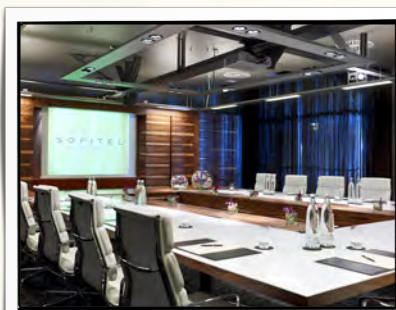


ROOM NAME	LENGTH (M)	WIDTH (M)	HEIGHT (M)	AREA (M²)	BANQUET	BLOCK	THEATRE	PARLIAMENT	U-SHAPE
LEHEL 1	6,89	3,36	3,10	23		12	16		
LEHEL 2	6,89	3,56	3,10	25		12	16		
LEHEL 2&3	6,89	7,23	3,10	50	10	16	26	16	15
LEHEL 3	6,89	3,56	3,10	25	-	12	16		
LEHEL 4	6,89	3,54	3,10	24	-	12	16		
LEHEL 5	6,89	3,47	3,10	24	-	12	16		
Lehel 5&6	6,89	7,05	3,10	49	10	16	26	16	15
Lehel 6	6,89	3,47	3,10	24		12	16		

EVENT FACILITIES

EVENT AREA 5TH FLOOR

Board Rooms A&B



ROOM NAME	LENGTH (M)	WIDTH (M)	HEIGHT (M)	AREA (M²)	BANQUET	BLOCK	THEATRE	PARLIAMENT	U-SHAPE
BOARDROOM A	8,00	10,00	3,10	83		20			16
BOARDROOM B	8,00	9,87	3,10	83	40	20	60	45	22

ADDITIONAL SERVICES

TECHNICAL EQUIPMENT



KFP Five Star Conference Service is your provider for audio-visual conference technology

In Germany, KFP is a leader as a business process outsourcing provider for audio-visual conference technology and has provided support to leading international hotel groups in partnerships lasting many years and to corporations with the appropriate conference facilities.

We offer you - as a planner or guest - individual service levels on the highest level. Professionally trained AV media technicians will provide support to you on site for professional concept design, result-oriented budget calculation and of course during the implementation.

As a specialist in the area of AV media technology, KFP mostly guarantees one thing in addition to state-of-the-art technology: that you do not have to worry about the technical implementation - technology and functionality are nothing new to us.

Our services are geared toward you - from small to large:

- Do you need a wireless mouse at the site?
- Are you planning a general shareholders' meeting with global live streaming?
- Do you want to initiate a HD video conference on short notice?
- Are you still concerned about the lack of a stage design or a light concept in the corporate design?
- Or do you need networked computers for interactive applications?

For many years, KFP has been in the hotel and knows all of the technical complexities encountered on site and has materials especially tailored to the needs of the hotel. In addition, we can present your meeting to you three-dimensionally and customised and also offer complete solution packages. This saves time and stress and is gentle on the budget due to minimal logistics processes - challenge us!

SOFITEL MUNICH BAYERPOST



Bayerstrasse 12, 80335 Munich, Germany
Tel : +49 (0)89 599 48 0
Fax: +49 (0)89 599 48 10 00
h5413@sofitel.com

www.sofitel-munich.com

