



SOFITEL  
FRANKFURT  
OPERA

PRESENTATION



SOFITEL  
HOTELS & RESORTS

# 01

## THE HOTEL



# THE HOTEL

## FRENCH ART DE VIVRE AND ELEGANCE IN THE HEART OF FRANKFURT



The stunning Sofitel Frankfurt Opera is located directly opposite the famous Alte Oper. The hotel's timeless architecture, inspired by the French townhouses or "hotels particuliers" of the 17th and 18th century, blends into the magnificent Opera square. The Sofitel Frankfurt Opera is just seconds away from the city centre, the financial district, the theatre and luxury shopping.

- Luxury hotel located next to S-Bahn station Taunusanlage and Hauptwache or U-Bahn station Alte Oper with direct connection from/to the airport and main train station
- Besides location, it is the newest, latest, most luxurious hotel offering the best service and the largest rooms in town
- Butler service starting at suite level
- Valet parking and public parking garage with a capacity of up to 320 slots as part of the building



02

LOCATION & ACCESS





# DESTINATION FRANKFURT AM MAIN

## DESTINATION INFORMATION

- The second largest financial centre in Europe (Frankfurt Stock Exchange, European Central Bank, German Federal Bank)
- Most important airport of Germany, 3rd busiest of Europe – 56 Million passengers per year
- Messe Frankfurt is one of the world's largest trade fairs at 578,000 square metres and ten exhibition halls

## NEARBY

Famous sites:	Römer, Römerberg, St. Paul's Church, Frankfurt Cathedral, Palmgarten, Mainuferpark
Museums:	Goethe Haus, German Architecture Museum, Museum of Applied Arts, Archaeological Museum Frankfurt
Performances:	Oper Frankfurt, Old Opera
Shopping & Gastronomy:	Freßgass', Goethestraße, Zeil



03

ROOMS & SUITES



# ROOMS & SUITES

## STANDARD ROOMS

Inspired by 17th- and 18th-century French hôtels particuliers - the interior is a mix of cozy décor and the atmosphere of modern times. The result is pure luxury and timeless elegance. In all rooms the guest have a picturesque views of the Old Opera or adjacent Stadtpark.

### Superior Room

55 rooms  
from 36 sqm

### Luxury Room

64 rooms  
from 45 sqm

- All rooms offer **BOSE sound system, illy-espresso machine, separate water boiler**, luxurious **wide-screen Samsung TV, free WiFi, Sofitel MyBed®**, all bathrooms equipped with separate toilette, **rain shower or bathtub** and luxuriously equipped with **Hermès amenities**
- Luxury rooms differ in room size, TV-size and offer an additional couch
- Mineral water in the room upon arrival
- Turn down service
- Shoe cleaning



## ROOMS & SUITES

### JUNIOR SUITES & SUITES

Inspired by 17<sup>th</sup> and 18<sup>th</sup> century French hôtels particuliers - the interior is a mix of cozy décor and the atmosphere of modern times. The result is pure luxury and timeless elegance. In all rooms the guest have a picturesque views of the Old Opera or adjacent Stadtpark.

#### Junior Suites

15 Suites  
from 50 sqm

#### Prestige Suites

13 Suites  
from 60 sqm

#### Opera Suites

2 Opera Suites  
90 sqm

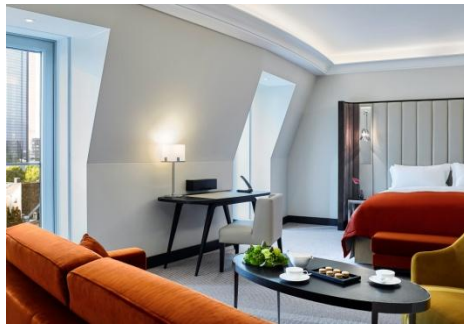
#### Presidential Suite

1 Suite  
120 sqm

- All suites include the mentioned equipment plus **separate baths, Skinjay, Japanese toilet, butler service** and **BOSE 321 system**
- The Presidential suite also boosts a magnificent **130 sqm terrace** overlooking the city of Frankfurt



# ROOMS & SUITES IMPRESSIONS



04

RESTAURANT, BAR & LOUNGE



## RESTAURANT, BAR & LOUNGE

### RESTAURANT SCHÖNEMANN

Celebrating gastronomy and great wine, Restaurant Schönemann offers a savant mix of fresh, local cuisine and fine French culinary techniques, affording truly unique dining experiences and gourmet adventures. Subtle and uncomplicated, the restaurant menu keeps the Parisian concept of bistronomique cuisine – forward-thinking, innovative, international food in a refined yet informal atmosphere.



The Restaurant Schönemann has a capacity of 85 persons. For all private or exclusive events we can offer a private dining room for up to 24 persons.



# RESTAURANT, BAR & LOUNGE

## LILI'S BAR

LILI'S bar is named after the first great love of famed German author Johann Wolfgang von Goethe, who was born in Frankfurt in 1749. The atmosphere of LILI'S bar is more sensual and provocative, tempting guests to a glass of fine wine or a signature cocktail.



05

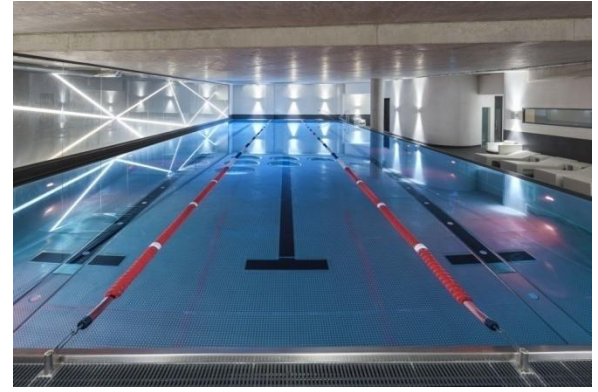
SO SPA & SO FIT



## SO SPA & SO FIT PURE MOMENTS OF PLEASURE

For pampering and relaxation, all guests have access to an exclusive So SPA and So FIT wellness area.

Relaxation at the highest level is offered by the So SPA and the So FIT. The hotel has a fitness room, a sauna and a steam bath, as well as a 25-meter swimming pool from Fitness First. After the sport pampered a massage or a luxury treatment. Our So SPA is the only Carita day spa in Frankfurt.



06

MAGNIFIQUE MEETINGS



# MAGNIFIQUE MEETINGS

An exceptional venue for meetings and events, Sofitel Frankfurt Opera has a team of experienced MAGNIFIQUE Meetings planners to ensure that every aspect of an event goes smoothly, from technology to catering. Four stylish boardrooms and a glamorous ballroom host up to 270 people for unique and special events, conferences and meetings. With its elegant and cozy style, the hotel is also an exceptional setting for private events, from anniversaries to weddings.

	SURFACE	HEIGHT	CLASSROOM	THEATRE	U-SHAPE	BOARDROOM	BANQUET	CABARET
Le Marais	320	4.09	160	270	75	80	180	126
Le Marais 1	131	4.09	50	110	33	40	60	42
Le Marais 2	93	4.09	36	75	31	34	40	28
Le Marais 3	94	4.09	57	85	30	28	50	35
Le Marais 1+2	223	4.09	86	185	64	74	100	70
Le Marais 2+3	189	4.09	85	146	30	36	90	63
Saint-Honoré - Boardroom	60	2.54	-	-	-	14	-	-
Saint-Germain	30	2.54	12	20	9	12	10	7
Quartier Latin	32	2.54	12	20	12	14	10	7
Île Saint-Louis	53	2.54	25	46	18	18	30	21
Mezzanine Gallery	333	3.07	-	-	-	-	-	-



# MAGNIFIQUE MEETINGS



SOFITEL  
HOTELS & RESORTS