

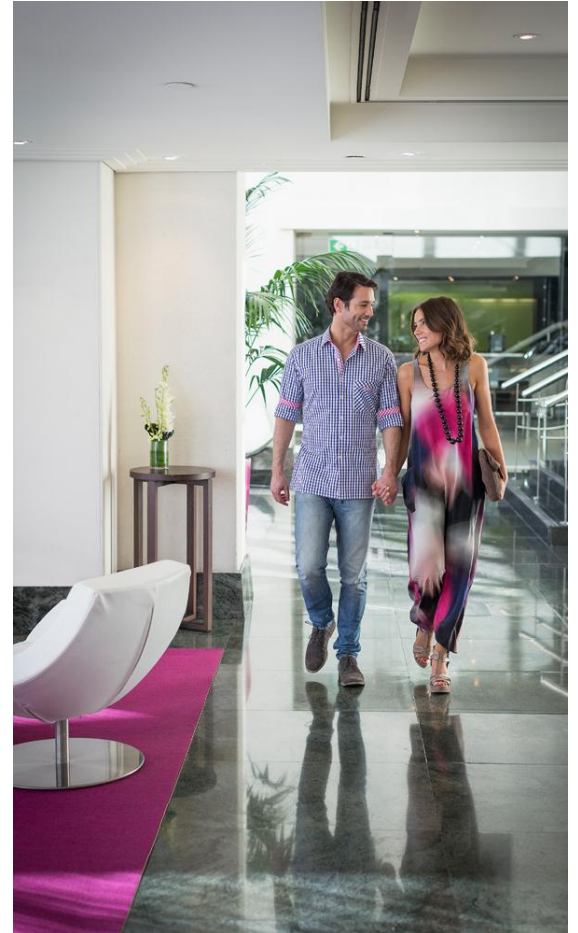


The Como Melbourne MGallery by Sofitel

THE
COMOMO
MELBOURNE



- > *Boutique Melbourne Hotel*
- > *Located in Vibrant South Yarra*
- > *Contemporary minimalist design & urban style*
- > *111 luxurious suites*
- > *9 event suites*
- > *The Brasserie, SOBar, Gym and Pool*
- > *Member of MGallery by Sofitel*









SOBar

- > Set in The Como Melbourne, this great Chapel Street bar is the perfect place to relax with a drink while soaking up the elegant, minimalist ambience. Sip fabulous cocktails or select from a wide variety of international beers and delicious wines by the glass or bottle. Our Melbourne bar is the ultimate place to meet family, friends or colleagues.
- > *Available for exclusive use*
- > *Up to 70 people*
- > *Open daily from 11 till late*





The Brasserie

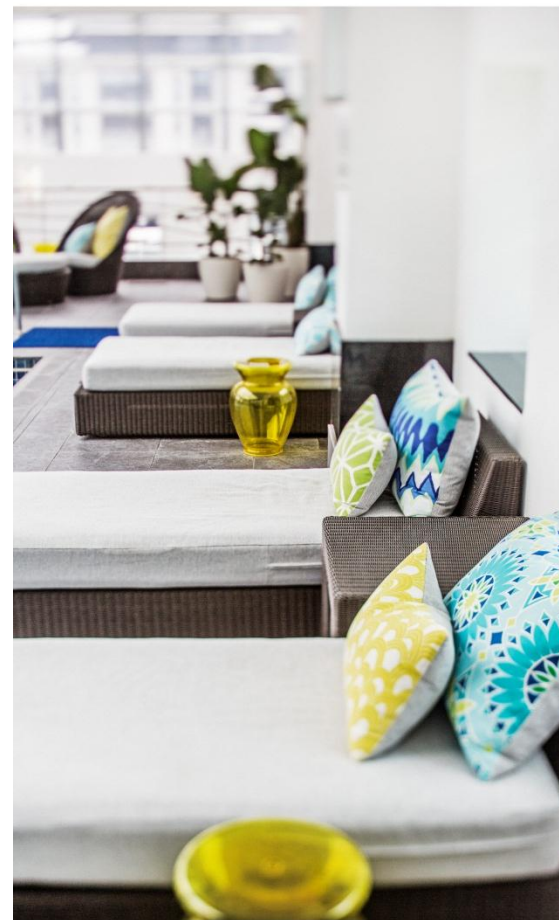
- > *Our Brasserie is opened daily for an delicious freshly prepared breakfast. With a buffet filled with cold items and an a la carte menu with a range of egg dishes and more, this is the perfect place to start your day.*
- > *Monday to Friday from 6:30 – 10:30*
- > *Saturday, Sunday and public holidays from 7:30 – 11:30*
- > *Up to 55 people*
- > *Available for private lunches and dinners*





Amenities

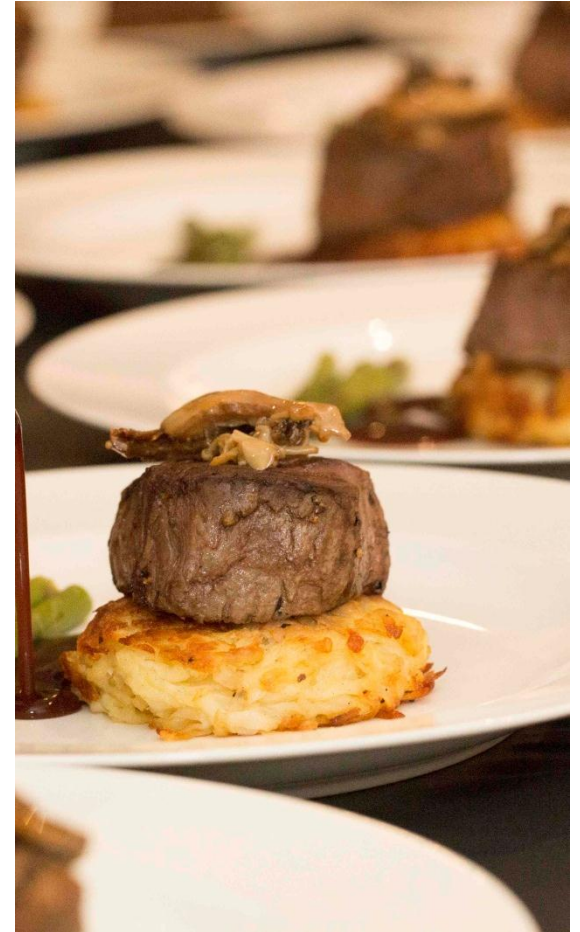
- > *24 hour reception, concierge and in-suite dining*
- > *Valet parking*
- > *On-site Gymnasium*
- > *Heated indoor pool & Sauna*
- > *Sundeck with barbeque*
- > *Charge back facilities at a number of neighbouring restaurants*
- > *Close to public transport*





Events

- > *9 event suites*
- > *Natural light and spacious break out areas*
- > *Sun Deck South Yarra – Pool side events venue*
- > *Free Wi-Fi for all delegates*
- > *Private boardroom with capacity for up to 8 delegates*
- > *Experienced events team.*







Feel Welcome

SOFITEL
LEGEND

SO
SOFITEL

SOFITEL
HOTELS & RESORTS

M
GALLERY
BY
SOFITEL

pullman